

Brand New

APPLY FOR OUR SPACIOUS 1 & 2 BEDROOM APARTMENTS



PORT JEFFERSON CROSSING

APPLICATIONS MUST BE POSTMARKED BY JANUARY 9, 2023 TO BE ENTERED INTO THE LOTTERY

LOTTERY TO BE HELD JANUARY 19, 2023 LOTTERY LOCATION: PORT JEFFERSON CROSSING

For applications, please visit www.portjeffersoncrossing.com

(4)	1 Bedrooms	30%	\$718
(29)	1 Bedrooms	60%	\$1,519
(4)	1 Bedrooms	95%	\$2,096
(1)	2 Bedrooms	30%	\$858
(6)	2 Bedrooms	60%	\$1,820
(1)	2 Bedrooms	95%	\$2,511

Mobility Impaired Adapted Units: (4) 1BR; (1) 2BR
Hearing Visually Impaired Units: (1) 1BR; (1) 2BR

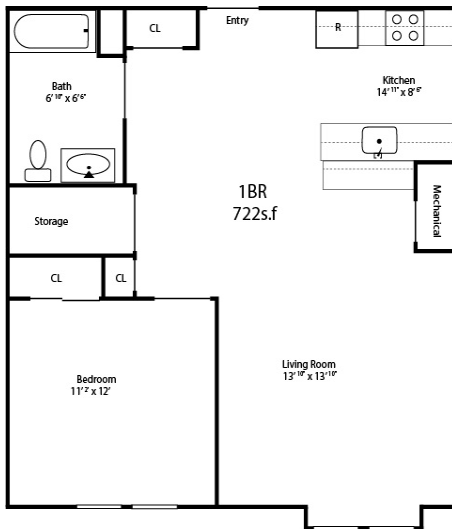
INCOME LIMITS BASED ON HOUSEHOLD SIZE

Maximum Income Limits	30%AMI	60%AMI	95% AMI
1 Person:	\$30,540	\$61,080	\$97,375
2 People:	\$34,890	\$69,780	\$111,340
3 People:	\$39,240	\$78,480	\$125,210
4 People:	\$43,590	\$87,180	\$139,080

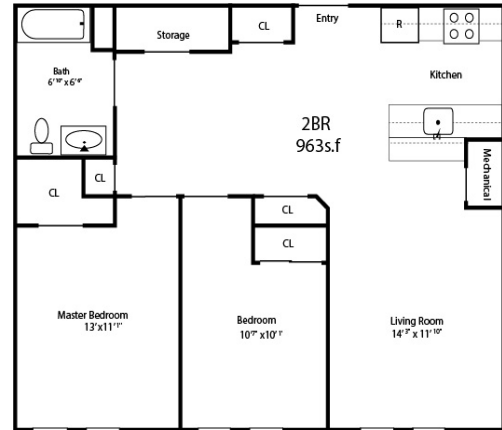
1615 Main Street, Port Jefferson, NY 11777

[E] portjeffersoncrossing@coniferllc.com [P] (631) 382-6725 [TTY] 1(800) 662-1220

TYPICAL 1 BEDROOM APT.



TYPICAL 2 BEDROOM APT.



Additional floor plans may be available. | Security deposit required. Income restrictions apply.

- Fully equipped kitchens w/Energy Star rated appliances & fixtures
- Spacious floor plans
- Elevator
- Central air
- Great Room
- Smart card laundry center
- Fitness room
- Controlled building access
- Small pets welcome restrictions apply
- Ample parking
- Smoke-free community
- Fully accessible & ADA compliant

**VISIT OUR WEBSITE ONLINE
TO BE ADDED TO OUR INTEREST
LIST FOR UPDATES**



WWW.PORTJEFFERSONCROSSING.COM