

# **Additional Systems Information**

- 1. SAP Readiness Check for SAP S4HANA Upgrade – Page 2**
- 2. SAP Tickets June 2024-June 2025 – Page 30**
- 3. SAP Transports June 2024-June 2025 – Page 33**
- 4. SAP Software Versions- June 2025 – Page 34**
- 5. List of Potential Reports Migrating to SAC– Page 35**
- 6. NYSHCR – S/4HANA Custom Code Overview – April 2025 - Page 38**



**CONFIDENTIAL**

# **SAP Readiness Check for SAP S/4HANA Upgrades [Redacted]**

## **Covering SAP S/4HANA 2023**

<b>Customer Name</b>	<b>New York State Homes &amp; Community Re</b>
<b>Customer Number</b>	<b>1387370</b>
<b>System ID</b>	<b>ECP (SAP S/4HANA 1909)</b>
<b>Date of Analysis</b>	<b>06/08/2025</b>

SAP SE  
Dietmar-Hopp-Allee 16  
69190 Walldorf  
Germany  
SAP Services and Support

# Contents

## **1 Introduction**

- 1.1 General Introduction
- 1.2 Scope of This Document
- 1.3 Disclaimer
- 1.4 Analysis Scope

## **2 Required Solution Adjustments for a System Upgrade to SAP S/4HANA**

- 2.1 SAP S/4HANA Simplification Items
  - 2.1.1 Relevant Simplification Items
  - 2.1.2 Simplification Items with Relevance to Be Checked
  - 2.1.3 Activities Related to Simplification Items

## **3 Compatibility Scope Analysis**

- 3.1 Relevant Non-Strategic Simplification Items
- 3.2 Non-Strategic Simplification Items with Relevance to be Checked

## **4 Minimum System and Landscape Requirements for a System Upgrade to SAP S/4HANA**

- 4.1 Add-On Compatibility
- 4.2 Recommended Additional Checks

## **5 Required Custom Code Adjustments for SAP S/4HANA Upgrades**

- 5.1 Custom Code
- 5.2 Recommended Additional Checks

## **6 Additional Information for a System Upgrade to SAP S/4HANA**

- 6.1 Recommended SAP Fiori Apps for SAP S/4HANA
- 6.2 App Availability
- 6.3 SAP Innovative Business Solutions

## **7 Required Adjustments for Integration**

- 7.1 IDoc Interfaces
- 7.2 Web Service Interfaces
- 7.3 RFC and BAPI Interfaces
- 7.4 BW Extractors
- 7.5 OData Service Interfaces
- 7.6 SLT Replications
- 7.7 Flat File Interfaces

# 1 Introduction

## 1.1 General Introduction

To provide customers with a better view of the results for their system landscapes when upgrading SAP S/4HANA, SAP offers the SAP Readiness Check tool for SAP S/4HANA upgrades.

## 1.2 Scope of This Document

SAP Readiness Check for SAP S/4HANA upgrades enable you to better understand the implications of upgrading to a later SAP S/4HANA version. The check helps to identify required preparations and pre-projects in the current system landscape before an SAP S/4HANA system upgrade project starts.

This document contains the analysis results of SAP Readiness Check for SAP S/4HANA upgrades for the system ID mentioned on the first page.

In addition, SAP Readiness Check for SAP S/4HANA upgrades provides the following system-specific information:

- Adjustments that are required for integration, including BW extractors and IDoc interfaces.
- Developments provided by the SAP Innovative Business Solutions organization (formerly known as the SAP Custom Development organization).
- Potential areas of innovation based on observed system use, including suggestions for SAP Fiori applications.

## 1.3 Disclaimer

By using SAP Readiness Check, you agree to the applicable terms and conditions available on the SAP Readiness Check Web site.

Please be aware that SAP Readiness Check is a high-level planning tool and designed as a first check in planning a system upgrade. SAP does not warrant the completeness of SAP Readiness Check.

## 1.4 Analysis Scope

System ID of Analysis	Date of Analysis
ECP	06/08/2025

### SAP S/4HANA: TARGET PRODUCT VERSION

Product	Product Version
SAP S/4HANA	SAP S/4HANA 2023

### INSTALLED PRODUCT VERSION

System ID	Installed Product Version
ECP	SAP S/4HANA 1909

### CURRENT DATABASE

System ID	Database System	Database ID
ECP	HDB	ECP

### OPERATING SYSTEM / SAP KERNEL RELEASE

System ID	Operating System	OS Version	SAP Kernel Release
ECP	Linux	4.18.0-513.18.1.el8_9.x86_64	777

## 2 Required Solution Adjustments for a System Upgrade to SAP S/4HANA

### 2.1 SAP S/4HANA Simplification Items

This section of SAP Readiness Check for S/4HANA upgrades displays those simplification items (out of the overall list of items) that are relevant for your specific upgrade. The identification mainly relies on table contents and used transactions.

The *Effort Ranking* indicates SAP's effort estimation for the corresponding simplification item:

- *Low*: The simplification item usually requires a fixed effort. It can typically be handled within a few days during the upgrade project.
- *Medium*: The simplification item usually requires a fixed effort. It can typically be handled within a few weeks during the upgrade project.
- *Potentially High*: The effort to handle the simplification item is usually high. However, the required effort varies depending on the customer-specific setup of applications.
- *Assessment Required*: SAP cannot make a generic statement for the simplification item. For an effort ranking, a subject matter expert assessment is required.

## GENERAL STATISTICS

Status	Number of Simplification Items
Overall number of simplification items	687
Check performed – the simplification item is not relevant. No follow-up activity required.	666
Check performed – the simplification item is relevant (this excludes “non-strategic items”). Check business impact note.	14
Relevance cannot be automatically determined (this excludes “non-strategic items”). Check business impact note.	7

## 2.1.1 Relevant Simplification Items

The following table lists simplification items that have been checked and are immediately relevant:

## RELEVANT SIMPLIFICATION ITEMS

LoB – BusinessArea	Title	Effort Ranking	Category	SAP Note	Relevance
IT Management - Administration and Usability	<b>S4TWL - Generic Check for SAP S/4HANA Conversion and Upgrade</b> SI22: GENERIC_CHECKS	Low (default)	Change of existing functionality	<a href="#">2618018</a>	Item is relevant. DB table 'T000' based check. Relevant criteria is ">0 " and number found is 1 .
Human Resources - Core HR and Time Recording	<b>S4TWL - Travel Management SRA004 Simplified Model</b> SI6: HR_SRA004 Simplified Model	Assessment Required (default)	Functionality deprecated (alternative exists)	<a href="#">3062197</a>	Item is relevant. DB table 'PTRV_HEAD' based check. Relevant criteria is ">100 " and number found is 101 .
Finance - Cost Management and Profitability Analysis	<b>S4TWL - Profitability Segment Number Change of Type</b> SI15: FIN_CO	Assessment Required (default)	Change of existing functionality	<a href="#">3320010</a>	Item is relevant. DB table 'TKA00' based check. Relevant criteria is ">0 " and number found is 1 .
Sourcing and Procurement - Invoice Management	<b>S4TWL - New Customizing for Exchange Rate Difference Handling</b> SI21: PROC_MM_IV_ERD	Assessment Required (default)	Change of existing functionality	<a href="#">3053636</a>	Item is relevant. DB table 'RBKP' based check. Relevant criteria is ">0 " and number found is 1 .
Finance - Treasury Management	<b>S4TWL - Logic changes in Flow Builder</b> SI4_FIN_CM	Assessment Required (default)	Change of existing functionality	<a href="#">3249131</a>	Item is relevant. DB table 'FQM_FLOW' based check. Relevant criteria is ">1000 " and number found is 1001 .
Finance - Financial Operations	<b>S4TWL - SAP Travel Management in SAP S/4HANA Suite</b> SI33: HR_TRAVEL	Assessment Required (default)	Change of existing functionality	<a href="#">2719018</a>	Item is relevant. DB table 'PTRV_HEAD' based check. Relevant criteria is ">100 " and number found is 101 .

LoB – BusinessArea	Title	Effort Ranking	Category	SAP Note	Relevance
Human Resources - Core HR and Time Recording	<b>S4TWL – HCM Obsolete Packages</b> SI19: HR_Obsolete_Packages	Assessment Required (default)	Functionality unavailable (no alternative planned)	<a href="#">3224319</a>	Item is relevant. DB table 'PA0000' based check. Relevant criteria is ">0 " and number found is 1 . ; Item relevant; business function H4S4_1 is inactive
IT Management - Administration and Usability	<b>S4TWL - New Default Security Settings for SAP S/4HANA</b> SI27: CT_SECURE_BY_DEFAULT	Low (default)	Change of existing functionality	<a href="#">2926224</a>	Item is relevant. DB table 'USR02' based check. Relevant criteria is ">0 " and number found is 1 .
Application Platform and Infrastructure - Process Management and Integration	<b>ABAPTWL - Change of authorization checks SAP Business Workflow</b> SI21: AS_ABAP_WORKFLOW_AUTHORIZATION_CHANGES	Assessment Required (default)	Change of existing functionality	<a href="#">2979517</a>	Item is relevant. Transaction ' SWI1 ' . Relevant criteria is ">0 " and number found is 1 .
Finance - Accounting and Financial Close	<b>S4TWL – Configuration Changes in Group Reporting</b> SI06: Configuration Changes in Group Reporting	Assessment Required (default)	Change of existing functionality	<a href="#">3326805</a>	Item is relevant. DB table 'TF001' based check. Relevant criteria is ">0 " and number found is 1 .
Database and Data Management - Enterprise Information Management	<b>S4TWL - Removal of Gender Domain Fixed Values</b> SI27: MasterData_BP	Assessment Required (default)	Change of existing functionality	<a href="#">2928897</a>	Item is relevant. DB table 'KNA1' based check. Relevant criteria is ">0 " and number found is 1 .
Solutions for Specific Industries - Banking	<b>S4TWL - FSBP Table Additional Partner Numbers (BPID001) obsolete</b> SI11: FIN_MISC_BPID001	Assessment Required (default)	Functionality deprecated (alternative exists with roadmap)	<a href="#">3004812</a>	Item is relevant. DB table 'BPID001' based check. Relevant criteria is ">0 " and number found is 1 .
Human Resources - Core HR and Time Recording	<b>S4TWL – Landing Pages and Suite Page Builder</b> SI18: HR_Landing_Pages_and_Suite_Page_Builder	Assessment Required (default)	Functionality unavailable (alternative exists)	<a href="#">3224337</a>	Relevant as checked by CLS4SIC_HR_LAND_P_SUITE_P_BUIL: .
Finance - Advanced Financial Operations	<b>S4TWL - Business Place: Enablement of language dependent name</b> SI11: GSFIN_BUPLA	Assessment Required (default)	Change of existing functionality	<a href="#">3404390</a>	Item is relevant. DB table 'J_1BBRANCH' based check. Relevant criteria is ">0 " and number found is 1 .

## 2.1.2 Simplification Items with Relevance to Be Checked

The following simplification items cannot be checked automatically but may be immediately relevant for your SAP S/4HANA upgrade. Please check the relevance of items from used application areas by the provided SAP Notes:

### SIMPLIFICATION ITEMS WITH RELEVANCE TO BE CHECKED

LoB – BusinessArea	Title	Effort Ranking	Category	SAP Note	Relevance
Finance - Accounting and Financial Close	<b>S4TWL – Migration from account solution to ledger solution</b> SI4: FIN_General	Assessment Required (default)	Change of existing functionality	<a href="#">3042755</a>	Dynamic call of class CLS4SIC_FI_ACC_CHECK method CHECK_RELEVANCE failed: Dynamic call of the method CHECK_RELEVANCE of the class CLS4SIC_FI_ACC_CHECK failed: The formal parameter IT_PARAMETER does not exist..
Application Platform and Infrastructure - Process Management and Integration	<b>S4TWL - Extended Check of Output Device in Output Control</b> SI28: CT_CHK_ITEM_DEVICE	Assessment Required (default)	Change of existing functionality	<a href="#">3093397</a>	CLS4SIC_APOC_CHK_ITEM_DEVICE not found; check the implementation status of SAP Note 0003057330.
Application Platform and Infrastructure - Process Management and Integration	<b>ABAPTWL - Deprecation of Hana Rules Framework</b> SI22: AS_ABAP_HANA_RULES_FRAMEWORK	Assessment Required (default)	Functionality deprecated (alternative exists)	<a href="#">3243120</a>	CLS4SIC_HANA_RULES_FRAMEWORK not found; check the implementation status of SAP Note 0003253779.
Application Platform and Infrastructure - Process Management and Integration	<b>ABAP4TWL - Removal of Transceiver Integration</b> SI18: AS_ABAP_TRANSCEIVER_INTEGRATION	Assessment Required (default)	Functionality unavailable (no alternative planned)	<a href="#">2879911</a>	Relevance cannot be determined. Please execute this check manually.
Finance - Financial Operations	<b>S4TWL - DMEE_BADI_01</b> SI11: FIN_General	Assessment Required (default)	Functionality deprecated (alternative exists)	<a href="#">3452702</a>	CLS4SIC_DMEE_BADI_01 not found; check the implementation status of SAP Note 0003465700.

LoB – BusinessArea	Title	Effort Ranking	Category	SAP Note	Relevance
Supply Chain - Delivery and Transportation	<b>S4TWL - Location Geo-Coding Adjustments</b> SI03: TM_CUSTOMIZING_3	Assessment Required (default)	Change of existing functionality	<a href="#">3290708</a>	CLS4SIC_TM_LOC_GC_LEVEL not found; check the implementation status of SAP Note 0002502552.
Finance - Financial Operations	<b>S4TWL - DMEE</b> SI10_FIN_General	Assessment Required (default)	Functionality deprecated (alternative exists)	<a href="#">3370503</a>	CLS4SIC_DMEE_AB A not found; check the implementation status of SAP Note 0003421371.

### 2.1.3 Activities Related to Simplification Items

This section shows you project-related activities per simplification item drawn from each individual simplification item business impact note and various other sources. This information helps you identify activities and direct to do so to the right departments in your organization.

NOTE: The activities per simplification item are derived from available documentation and might not cover all actions that are required during your SAP S/4HANA upgrade project.

#### GENERAL STATISTICS

Status	Number of Objects
Overall Number of Activities	35

Related Simplification Item	Activities	Condition	Additional Information
ABAP4TWL - Removal of Transceiver Integration (SI18: AS_ABAP_TRANSCIVER_INTEGRATION)	Custom Code Adaption	Mandatory	Remove usages of the deleted objects from your custom code.
ABAPTWL - Change of authorization checks SAP Business Workflow (SI21: AS_ABAP_WORKFLOW_AUTHORIZATION_CHANGES)	Technical System Configuration	Mandatory	Adapt your roles and authorizations as described in SAP note 2979517.
ABAPTWL - Deprecation of Hana Rules Framework (SI22: AS_ABAP_HANA_RULES_FRAMEWORK)	Data migration	Conditional	Carry out a migration or remodeling from HRF to Business Rule Framework plus (BRF+) as explained in the Business Impact Note.

Related Simplification Item	Activities	Condition	Additional Information
S4TWL - Business Place: Enablement of language dependent name (S11: GSFIN_BUPLA)	Custom Code Adaption	Mandatory	
S4TWL - DMEE (S110_FIN_General)	Customizing / Configuration	Optional	Perform migration to successor transaction DMEEEX as described in SAP note 3370503.
S4TWL - DMEE (S110_FIN_General)	User Training	Optional	Inform user about status change and alternative transaction.
S4TWL - DMEE_BADI_01 (S11: FIN_General)	Custom Code Adaption	Mandatory	Migrate existing implementations of classic BAdI DMEE_BADI_01 to BAdI DMEE_OUTPUT_POSTPROCESSING according to note 3452702.
S4TWL - Extended Check of Output Device in Output Control (S128: CT_CHK_ITEM_DEVICE)	Data correction	Conditional	Run consistency check and perform data corrections, if necessary, before the upgrade to SAP S/4HANA 2021 or later.
S4TWL - FSBP Table Additional Partner Numbers (BPID001) obsolete (S11: FIN_MISC_BPID001)	Customizing / Configuration	Mandatory	
S4TWL - FSBP Table Additional Partner Numbers (BPID001) obsolete (S11: FIN_MISC_BPID001)	Data migration	Mandatory	
S4TWL - Generic Check for SAP S/4HANA Conversion and Upgrade (S122: GENERIC_CHECKS)	Custom Code Adaption	Mandatory	This simplification Item serves as an anchor for assigning custom code check related content, which is not related to any specific functional or technical area (e.g. deletion of unused orphaned objects).
S4TWL - Generic Check for SAP S/4HANA Conversion and Upgrade (S122: GENERIC_CHECKS)	Miscellaneous	Mandatory	This simplification item provides various generic, technical checks which need to run before a conversion or upgrade in SAP S/4HANA and which affect all customers - irrespective of the specific SAP S/4HANA target release.

Related Simplification Item	Activities	Condition	Additional Information
S4TWL - Location Geo-Coding Adjustments (SI03: TM_CUSTOMIZING_3)	Customizing / Configuration	Mandatory	Fix all locations with affected geo-coordinates as described in SAP note 3290708 .
S4TWL - Logic changes in Flow Builder (SI4_FIN_CM)	Custom Code Adaption	Conditional	If you have own extensions in Flow Builder 1.0 consider using newly offered enhancement points.
S4TWL - Logic changes in Flow Builder (SI4_FIN_CM)	Customizing / Configuration	Mandatory	Perform configuration as documented in SAP online help.
S4TWL - Logic changes in Flow Builder (SI4_FIN_CM)	User Training	Mandatory	Train users on the new cash flow concepts.
S4TWL - New Customizing for Exchange Rate Difference Handling (SI21: PROC_MM_IV_ERD)	Custom Code Adaption	Mandatory	
S4TWL - New Default Security Settings for SAP S/4HANA (SI27: CT_SECURE_BY_DEFAULT)	Business Operations	Conditional	After the conversion or upgrade, check if you need to configure log retention for the different logs (e.g. SAP S/4HANA Security Audit Log, SAP S/4HANA Table Logging, SAP HANA Audit Log) to control the size of the different logs.
S4TWL - New Default Security Settings for SAP S/4HANA (SI27: CT_SECURE_BY_DEFAULT)	Customizing / Configuration	Conditional	In case you accept the new security settings to be applied during conversion, check if you need to extend roles with additional authorizations for calling specific function modules (only from SAP S/4HANA 2020 onwards) and for calling WebDynpro applications (only from SAP S/4HANA 2021 onwards).
S4TWL - New Default Security Settings for SAP S/4HANA (SI27: CT_SECURE_BY_DEFAULT)	Technical System Configuration	Mandatory	Decide if you want to take over the new security settings during conversion or if you want to opt out (not recommended).

Related Simplification Item	Activities	Condition	Additional Information
S4TWL - New Default Security Settings for SAP S/4HANA (SI27: CT_SECURE_BY_DEFAULT)	User Training	Conditional	In case you accept the new security settings to be applied during conversion, educate your administrators on the changes.
S4TWL - Profitability Segment Number Change of Type (SI15: FIN_CO)	Custom Code Adaption	Conditional	Adapt usages of PAOBJR found by ATC as described in SAP note <note number>-
S4TWL - Removal of Gender Domain Fixed Values (SI27: MasterData_BP)	Business Process Redesign	Mandatory	Ensure that your business processes (also in connected systems) are prepared to handle the new gender codes properly.
S4TWL - Removal of Gender Domain Fixed Values (SI27: MasterData_BP)	Custom Code Adaption	Mandatory	Usages of fixed values of domains AD_SEX, BU_SEXID and SEXKZ needs to be replaced with values from check tables TSAD15 and TB995. Refer to SAP Note 2928897 for details.
S4TWL - SAP Travel Management in SAP S/4HANA Suite (SI33: HR_TRAVEL)	Business Decision	Mandatory	For new customer, Decide if SAP Concur shall be implemented as the go-forward travel and expense platform.
S4TWL - SAP Travel Management in SAP S/4HANA Suite (SI33: HR_TRAVEL)	Custom Code Adaption	Optional	If you have custom Code, review it and report it in the new product SAP TM for SAP S/4HANA, the conversion of custom code is not included in the standard delivery.
S4TWL - SAP Travel Management in SAP S/4HANA Suite (SI33: HR_TRAVEL)	Implementation project required	Mandatory	Decide if the implementation of the new FIORI applications is needed and check the migration guide
S4TWL - Travel Management SRA004 Simplified Model (SI6: HR_SRA004 Simplified Model)	Custom Code Adaption	Mandatory	If you have Custom code, refer to the additional notes to implement your code with Extensibility concept in the new application.

Related Simplification Item	Activities	Condition	Additional Information
S4TWL - Travel Management SRA004 Simplified Model (SI6: HR_SRA004 Simplified Model)	Customizing / Configuration	Mandatory	Refer to the Application Library to setup proper configuration in FIORI Launchpad
S4TWL - Travel Management SRA004 Simplified Model (SI6: HR_SRA004 Simplified Model)	User Training	Optional	Even if the UI is intuitive, you can plan a training session for your users as new features are available with the version 2 of the application
S4TWL – Configuration Changes in Group Reporting (SI06: Configuration Changes in Group Reporting)	Customizing / Configuration	Mandatory	Change customizing before upgrade as described in note 3326805.
S4TWL – HCM Obsolete Packages (SI19: HR_Obsolete_Packages)	Business Decision	Mandatory	Decide on and plan for the migration to SAP HCM for SAP S/4HANA, considering the functional implications described in the Business Impact Note of this Simplification Item.
S4TWL – Landing Pages and Suite Page Builder (SI18: HR_Landing_Pages_and_Suite_Page_Builder)	Business Decision	Mandatory	Before the conversion or upgrade to SAP HCM for SAP S/4HANA 2022 or higher, check whether the functionality is used or not. If the functionality is used and still required, a similar function is provided with the Fiori role for HR Specialist
S4TWL – Landing Pages and Suite Page Builder (SI18: HR_Landing_Pages_and_Suite_Page_Builder)	Fiori Implementation	Mandatory	Implement Fiori role for HR Specialist. The new role follows the latest UX strategy from SAP by using an SAP Fiori role instead of HR Renewal Landing Pages based on the Suite Page Builder. Please note: the Web Dynpro ABAP services to maintain employee related data are still supported and will be incorporated into the new HR Specialist role.
S4TWL – Migration from account solution to ledger solution (SI4_FIN_Genera l)	Business Decision	Mandatory	Decide about future parallel accounting strategy.

### 3 Compatibility Scope Analysis

SAP's compatibility packages offer customers a limited usage right to run certain classic SAP ERP solutions on SAP S/4HANA, provided that customers have licensed the applicable solutions, as set forth in their license agreements.

Overall, the following statistics related to Compatibility Packages were identified in your system:

#### GENERAL STATISTICS

Status	Number of Objects
Overall number of Simplification Items related to Compatibility Packages	4
Check performed, "non-strategic" item is relevant. Check business impact note.	0
Relevance for "non-strategic" item cannot be automatically determined. Check business impact note.	4
Number of Compatibility Packages with existing alternatives.	8
Number of Compatibility Packages with alternatives existing on the roadmap.	0
Number of Compatibility Packages with planned alternative.	0
Number of Compatibility Packages with no planned alternative.	0

To address these findings, please review the instructions below:

To identify compatibility packages that might be relevant for you, review the simplification items presented in the table. Each item in the list is related to certain compatibility scope IDs and is part of the SAP S/4HANA compatibility scope, which comes with limited usage rights.

Due to that, you need to migrate from the classic SAP ERP solution to its designated alternative functionality before the compatibility package license expires. In support of the next steps, the table provides the following information:

- The simplification item details from the SAP simplification item catalog can be viewed by selecting the simplification item title in the table.
- The associated business impact notes provided in the table offer further context to the simplification item and describe the recommended actions to take.
- The compatibility scope status offers information about which compatibility packages have an existing alternative.
- The side panel per table entry offers detailed information about the alternative solutions.

As the classic SAP ERP solution can still be used until the expiry date of the compatibility package license, it is a business decision to evaluate when and with which of the coming SAP S/4HANA releases you want to migrate to the alternative functionality. To plan accordingly for the migration efforts, we recommend you take this decision long before the compatibility package license expires. The respective business impact notes provide the following information to address this decision:

- The scope of the old compatibility package functionality
- The (expected) scope of the alternative functionality
- Any gaps or deltas between the old and the alternative functionality
- When the alternative functionality is planned to be available and how to close any remaining gaps to the old functionality, in case there is a staged delivery

Please note that simplification items related to compatibility packages are of the category "non-strategic function" and do not necessarily need to be addressed before or during an upgrade or conversion project. Whereas simplification items of other categories usually require immediate action, those belonging to this category can be addressed as part of a follow-up project, depending on the expiration date of the usage rights and technical dependencies on a specific product version.

### 3.1 Relevant Non-Strategic Simplification Items

The following table lists simplification items related to Compatibility Packages that have been checked and are immediately relevant:

#### RELEVANT SIMPLIFICATION ITEMS

Simplification item title	Compatibility Scope ID	Alternative - Feature Scope Description Entry	Status	Alternative	Business Impact Note
<a href="#">S4TWL - General HCM Approach within SAP S/4HANA</a>	137		Alternative Exists	SAP SuccessFactors Employee Central (material code 8011736)	<a href="#">2273108</a>
<a href="#">S4TWL - Warehouse Control Interface</a>	476	<a href="#">Basic Warehouse Management</a>	Alternative Exists With Roadmap	SAP S/4HANA: Basic Warehouse Management (SAP EWM)	<a href="#">2889468</a>
<a href="#">S4TWL - General HCM Approach within SAP S/4HANA</a>	137		Alternative Exists	SAP Core HCM for SAP S/4HANA (material code 7020923)	<a href="#">2273108</a>
<a href="#">S4TWL - General HCM Approach within SAP S/4HANA</a>	101		Alternative Exists	SAP SuccessFactors Employee Central Payroll	<a href="#">2273108</a>
<a href="#">S4TWL - Personnel Development</a>	423		Alternative Exists	SAP SuccessFactors	<a href="#">3224316</a>
<a href="#">S4TWL - General HCM Approach within SAP S/4HANA</a>	101		Alternative Exists	SAP Payroll, private cloud edition or SAP Payroll for SAP S/4HANA	<a href="#">2273108</a>
<a href="#">S4TWL - Personnel Development</a>	422		Alternative Exists	SAP HCM for SAP S/4HANA	<a href="#">3224316</a>

Simplification item title	Compatibility Scope ID	Alternative - Feature Scope Description Entry	Status	Alternative	Business Impact Note
<a href="#">S4TWL - General HCM Approach within SAP S/4HANA</a>	138		Alternative Exists	SAP Time Tracking for SAP S/4HANA (material code 7020924)	<a href="#">2273108</a>
<a href="#">S4TWL - Personnel Development</a>	423		Alternative Exists	SAP HCM for SAP S/4HANA	<a href="#">3224316</a>
<a href="#">S4TWL - HIS and Structural Graphic</a>	137		Alternative Exists	SAP SuccessFactors Employee Central (material code 8011736)	<a href="#">3224340</a>
<a href="#">S4TWL - General HCM Approach within SAP S/4HANA</a>	132		Alternative Exists	SAP SuccessFactors	<a href="#">2273108</a>
<a href="#">S4TWL - Personnel Development</a>	422		Alternative Exists	SAP SuccessFactors	<a href="#">3224316</a>
<a href="#">S4TWL - General HCM Approach within SAP S/4HANA</a>	138		Alternative Exists	SAP SuccessFactors Time Tracking (material code 8008975)	<a href="#">2273108</a>
<a href="#">S4TWL - General HCM Approach within SAP S/4HANA</a>	415		Alternative Exists	SAP HCM for SAP S/4HANA	<a href="#">2273108</a>
<a href="#">S4TWL - General HCM Approach within SAP S/4HANA</a>	132		Alternative Exists	SAP HCM for SAP S/4HANA	<a href="#">2273108</a>

Simplification item title	Compatibility Scope ID	Alternative - Feature Scope Description Entry	Status	Alternative	Business Impact Note
<a href="#">S4TWL - General HCM Approach within SAP S/4HANA</a>	415		Alternative Exists	SAP Successfactors	<a href="#">2273108</a>
<a href="#">S4TWL – HIS and Structural Graphic</a>	137		Alternative Exists	SAP Core HCM for SAP S/4HANA (material code 7020923)	<a href="#">3224340</a>
<a href="#">S4TWL – Personnel Development</a>	418		Alternative Exists	SAP HCM for SAP S/4HANA	<a href="#">3224316</a>
<a href="#">S4TWL – Personnel Development</a>	418		Alternative Exists	SAP Successfactors	<a href="#">3224316</a>
<a href="#">S4TWL - Warehouse Control Interface</a>	476	<a href="#">Stock Room Management</a>	Alternative Exists With Roadmap	SAP S/4HANA: Stock Room Management	<a href="#">2889468</a>

### 3.2 Non-Strategic Simplification Items with Relevance to be Checked

The following non-strategic simplification items related to Compatibility Packages cannot be checked automatically. Please check the relevance of items from used application areas by the provided Business Impact SAP Notes:

#### NON-STRATEGIC SIMPLIFICATION ITEMS WITH RELEVANCE TO BE CHECKED

There is no simplification item with relevance to be checked (non-strategic)

## 4 Minimum System and Landscape Requirements for a System Upgrade to SAP S/4HANA

The following section contains information about the compatibility of the installed add-ons with the target SAP S/4HANA release. It also provides information about additional important checks that are not provided as part of SAP Readiness Check for SAP S/4HANA upgrades.

## 4.1 Add-On Compatibility

### OVERVIEW BY STATUS

Status	Number of Add-Ons
Incompatible	0
Unknown	6
Incompatible (Un-installable)	0
Compatible (Software Entitlement Required)	0
Certified Third-Party Software	0
Certified Third-Party Software Available	0
Compatible	0
Check Further Information	0

### Explanation of Status:

- **Incompatible:** The add-on is currently not supported by the target SAP S/4HANA release. It might be compatible with a lower release of SAP S/4HANA or not compatible at all. Since the add-on will block your upgrade, it needs to be taken care of as soon as possible.
- **Incompatible (Un-installable):** The add-on is incompatible but can be uninstalled. It won't block your upgrade but should be reviewed as soon as possible.
- **Unknown:** The add-on needs to be validated for compatibility with the selected target SAP S/4HANA release. A follow-up with the third-party vendor is required as soon as possible, since incompatible third-party add-ons will block your upgrade.
- **Compatible (Software Entitlement Required):** A compatible version of the add-on exists. However, it's not entitled to your user. A follow-up with your SAP Account Executive is required as soon as possible, since this will block your upgrade.
- **Certified Third-Party Software:** The add-on is certified third-party software. To confirm the compatibility of the add-on with the target SAP S/4HANA release, a follow-up with the third-party vendor is required as soon as possible.
- **Certified Third-Party Software Available:** The add-on is generally certified, but not for the currently selected target SAP S/4HANA release or the currently installed version of the add-on.
- **Compatible:** The add-on is compatible with SAP S/4HANA.

**Note:** Incompatible add-ons will block your upgrade during the Software Update Manager execution and, therefore, need to be taken care of.

For further investigation, create an incident on component XX-SER-REL or BC-UPG-ADDON.

### ADD-ONS ARE NOT (YET) SUPPORTED BY THE SAP S/4HANA TARGET RELEASE

There is no add-on with status "Incompatible"

### SOFTWARE COMPONENT VERSIONS NOT ASSIGNED TO ANY INSTALLED PRODUCT VERSION

Software Component	Status
USER INTERFACE TECHNOLOGY 7.54	
SAP ABA 7.5E	
SAP NW 7.40 BI CONT ADDON 7.57	
SAP BASIS 7.54	
SAP BW 7.54	
SAP NW GATEWAY FOUNDATION 7.54	

#### **THIRD-PARTY ADD-ONS**

There are no Third-party add-ons detected.

For third-party add-ons, please contact the vendor directly to confirm that the respective add-on is released for SAP S/4HANA in its current version or in a successor version.

If an add-on is no longer required, please check with the vendor if a package for uninstalling the add-on is available.

#### **ADD-ONS WHICH ARE INCOMPATIBLE BUT CAN BE UNINSTALLED**

There is no add-on which is incompatible but can be uninstalled

#### **ADD-ONS WHICH ARE CERTIFIED THIRD-PARTY SOFTWARE**

There is no add-on which is certified Third-party Software

#### **ADD-ONS WHICH ARE CERTIFIED THIRD-PARTY SOFTWARE AVAILABLE**

There is no add-on which is certified Third-party Software Available

#### **ADD-ONS WHICH ARE COMPATIBLE TO THE SAP S/4HANA TARGET RELEASE**

There is no add-on with status "Compatible"

## **4.2 Recommended Additional Checks**

# **5 Required Custom Code Adjustments for SAP S/4HANA Upgrades**

## **5.1 Custom Code**

## **5.2 Recommended Additional Checks**

# **6 Additional Information for a System Upgrade to SAP S/4HANA**

## **6.1 Recommended SAP Fiori Apps for SAP S/4HANA**

SAP S/4HANA offers SAP Fiori applications as an alternative to SAP GUI transactions and reports. New applications in SAP S/4HANA are always built with the SAP Fiori user interface. For more information, see [SAP Readiness Check 2.0 – Details about the topic of SAP Fiori](#).

The following list includes the most relevant SAP Fiori applications, based on the transaction usage history in the analyzed system.

#### **GENERAL INFORMATION**

General Indicators	Values
Total Number of SAP Fiori Lighthouse Apps	38
Total Number of SAP Fiori Apps	774
Total Number of SAP Fiori Theme Classic UI Apps	94

SAP Fiori Role	Number of SAP Fiori Apps
Cash Management Specialist	107
Purchaser	106
Cash Manager	98
General Ledger Accountant	88
Internal Sales Representative	65
Configuration Expert - Business Process Configuration	57
Accounts Receivable Accountant	56
Strategic Buyer	53
Cost Accountant - Overhead	53
Budget Specialist - Funds Management	44
Budget Responsible - Funds Management	43
Accounts Payable Accountant	38
Inventory Manager	36
Warehouse Clerk	32
Shipping Specialist - Just-In-Time Supply	27
Returns & Refund Clerk	26
Shipping Specialist	24
Accounts Payable Manager	24
Cost Accountant - Sales	23
Receiving Specialist	23
Accounts Receivable Manager	23
Asset Accountant	22
Commodity Risk Manager - Hedge Accounting	22
Purchaser - Central Procurement	22
Sales Manager	20
Treasury Specialist - Back Office	20
Billing Clerk	19
Divisional Accountant	18
Settlement Clerk (Agricultural Contract Management)	17
Employee	17
Treasury Accountant	16
Production Planner	16
Service Manager	16
Operations Clerk (Agricultural Contract Management)	15

SAP Fiori Role	Number of SAP Fiori Apps
Payment Specialist - In-House Banking	15
Employee - Procurement	14
Sourcing Manager	14
Accounts Payable Accountant - Procurement	14
Material Planner - External Procurement	14
Administrator	13
Administrator - Accounts Payable and Receivable (FI-CA)	13
Payment Specialist	13
Sales Manager (Customer Management)	13
Payment Specialist	13
Extensibility Specialist	13
Inventory Manager (Retail)	11
Purchasing Manager	11
Trader - Futures	11
Project Manager (Commercial Project Management)	10
Warehouse Clerk (Retail)	10
Project Financial Controller	9
Manager - Inbox	9
Configuration Expert - Business Network Integration	9
Treasury Risk Manager	8
Treasury Specialist - Front Office	8
Master Data Specialist - Business Partner Data	7
Accounts Payable and Receivable Accountant (FI-CA)	7
Trading Manager - Commodity Derivative Orders	7
Maintenance Planner	7
Master Data Specialist - Product Data	6
Loan Officer	6
External Auditor	6
Employee - Travel Info	6
SAP_BR_RFM_STORE_MANAGER	5
Master Data Specialist - Batch Data	5
Reconciliation Specialist - Accounts Payable and Receivable (FI-CA)	5
Administrator - International Trade	5
Master Data Specialist - Commodity Management	5
Manager - Procurement	5
SAP_BR_RFM_STORE_ASSOCIATE	5
Group Accountant	5
Change Management Coordinator	5

SAP Fiori Role	Number of SAP Fiori Apps
Credit Controller	5
Trade Compliance Specialist	4
General Ledger Accountant for Canada	4
Systems Engineer	4
Administrator - Recipe Development	4
Master Data Specialist - Product Compliance	4
General Ledger Accountant for Australia	4
BOM Engineer - Customer Order	4
Master Data Specialist - Raw Substance Data	4
Analytics Specialist	4
SAP_BR_MD_SPCLST_ITEM_RFM	4
Order Fulfillment Specialist (Retail)	4
General Ledger Accountant for New Zealand	4
Material Planner - Just-In-Time Supply	4
General Ledger Accountant for South Africa	4
Cash Management Specialist for USA	4
Business Process Specialist	4
General Ledger Accountant for Turkey	4
Trader (Agricultural Contract Management)	4
Project Logistics Controller	3
Accounts Payable Manager for United Kingdom	3
Cash Manager for Thailand	3
General Ledger Accountant for Singapore	3
General Ledger Accountant for Sweden	3
Production Supervisor - Repetitive Manufacturing	3
BOM Engineer	3
General Ledger Accountant for India	3
Product Stewardship Specialist - Product Compliance	3
General Ledger Accountant for Portugal	3
Administrator - Group Reporting	3
Trade Classification Specialist	3
General Ledger Accountant for Belgium	3
Collections Specialist (FI-CA)	3
General Ledger Accountant for Austria	3
Accounts Payable and Receivable Manager (FI-CA)	3
Accounts Payable Accountant for China	3
Grant Responsible	3
General Ledger Accountant for Italy	3
Staff Accountant - Loans Management	3

SAP Fiori Role	Number of SAP Fiori Apps
Production Operator - Process Manufacturing	3
Internal Sales Representative (Subscription Order Management)	3
General Ledger Accountant for Japan	3
Production Operator - Lean Manufacturing	3
General Ledger Accountant for Israel	3
General Ledger Accountant for Norway	3
Data Privacy Specialist - Consent Management	3
Travel Agent	3
General Ledger Accountant - Group Reporting	3
General Ledger Accountant for Denmark	3
Production Supervisor - Discrete Manufacturing	3
General Ledger Accountant for Luxembourg	3
Production Engineer - Discrete Manufacturing	3
Production Operator - Repetitive Manufacturing	3
General Ledger Accountant for Thailand	3
Maintenance Technician	3
External Auditor - Group Reporting	3
Billing Clerk for India	3
Accounts Payable Manager for Malaysia	3
General Ledger Accountant for Malaysia	3
Development Manager - Discrete Industry	3
General Ledger Accountant for Spain	3
Grant Specialist - Grantor Programs	3
Production Operator - Discrete Manufacturing	3
General Ledger Accountant for Netherlands	3
Production Engineer - Process Manufacturing	3
Production Supervisor - Process Manufacturing	3
Design Engineer	3
General Ledger Accountant for Switzerland	3
General Ledger Accountant for France	3
General Ledger Accountant for Finland	3
Accounts Payable Manager for Croatia	2
Cash Manager for Indonesia	2
Asset Accountant for Italy	2
Insurance Policy Clerk	2
Accounts Payable Manager for South Korea	2
Accounts Payable Manager for Slovenia	2
HR Specialist	2

SAP Fiori Role	Number of SAP Fiori Apps
Accounts Payable Manager for Serbia	2
General Ledger Accountant for Indonesia	2
Asset Accountant for Portugal	2
Accounts Payable Manager for Portugal	2
Cash Management Specialist for China	2
Organizational Planner - Force Element	2
Accounts Payable Manager for Colombia	2
Configuration Expert - Data Migration	2
Accounts Payable Manager for Spain	2
General Ledger Accountant for Peru	2
Accounts Payable Manager for Kazakhstan	2
Accounts Payable Manager for Peru	2
General Ledger Accountant for Hungary	2
Accounts Payable Manager for Canada	2
General Ledger Accountant for Ireland	2
Cash Manager for Malaysia	2
Accounts Receivable Manager for Thailand	2
Tax Accountant - Corporate Income Tax	2
Asset Accountant for Singapore	2
Production Planner - Advanced Planning	2
Accounts Payable Manager for Singapore	2
Accounts Payable Manager for Thailand	2
Asset Accountant for Slovakia	2
Accounts Payable Manager for Slovakia	2
Accounts Payable Manager for Bulgaria	2
Accounts Payable Manager for Argentina	2
Accounts Payable Manager for Poland	2
Accounts Payable Manager for Germany	2
Accounts Payable Manager for Chile	2
Revenue Accountant	2
Administrator (Retail)	2
General Ledger Accountant for Germany	2
Industrial Hygienist	2
Accounts Payable Manager for Italy	2
General Ledger Accountant for Czech Republic	2
Accounts Payable Manager for Ireland	2
Accounts Payable Manager for Indonesia	2
Accounts Payable Manager for Japan	2
Accounts Payable Manager for Belgium	2

SAP Fiori Role	Number of SAP Fiori Apps
Master Data Specialist (Agricultural Contract Management)	2
Accounts Payable Manager for Australia	2
Accounts Payable Manager for Belize	2
Environmental Manager	2
General Ledger Accountant for United Kingdom	2
General Ledger Accountant for Slovakia	2
General Ledger Accountant for Philippines	2
SAP_FND_BCR_MANAGER_T	2
Accounts Payable Manager for Philippines	2
Accounts Payable Manager for Greece	2
General Ledger Accountant for Russian Federation	2
SAP_BR_CMMFSA_MD_MANAGER	2
Grant Specialist	2
General Ledger Accountant for Argentina	2
General Ledger Accountant for Romania	2
Treasury Specialist - Middle Office	2
General Ledger Accountant for Croatia	2
Asset Accountant for Poland	2
Administrator - Revenue Accounting	2
Accounts Payable Manager for France	2
Credit Analyst - Loans Management	2
General Ledger Accountant for Bulgaria	1
Accounts Payable Manager for USA	1
Hazardous Materials Manager	1
Accounts Payable Accountant for Israel	1
Administrator - Sourcing	1
Product Configuration Modeler (Subscription Order Management)	1
Asset Accountant for Luxembourg	1
SAP_BR_AP_PER_ACT_ES	1
Accounts Receivable Accountant for China	1
Transportation Manager	1
Asset Accountant for Israel	1
General Ledger Accountant for South Korea	1
Asset Accountant for Romania	1
General Ledger Accountant for Colombia	1
Project Steering Committee Member	1
Project Manager	1
Employee - Legal Content Management	1

SAP Fiori Role	Number of SAP Fiori Apps
Cost Accountant - Production	1
Asset Accountant for Bulgaria	1
SAP_BR_EMPLOYEE_SOURCING	1
General Ledger Accountant for Serbia	1
General Ledger Accountant for Egypt	1
Inventory Analyst	1
General Ledger Accountant for Slovenia	1
SAP_HCMFAB_BCR_EMPLOYEE_T	1
Accounts Payable Manager for Egypt	1
General Ledger Accountant - Intercompany	1
Accounts Payable Accountant for Poland	1
General Ledger Accountant for Taiwan	1
General Ledger Accountant - Reporting for USA	1
Audit Specialist for Israel	1
Billing Clerk for Spain	1
Order-to-Cash Process Manager	1
General Ledger Accountant for Saudi Arabia	1
Customer Service Manager - In-House Repair	1
General Ledger Accountant for Chile	1
General Ledger Accountant for Ukraine	1
Accounts Payable Accountant for Slovenia	1
General Ledger Accountant for Qatar	1
Accounts Payable Accountant for Romania	1
Production Planner - Lean Manufacturing	1
Intrastat Specialist	1
External Auditor - Accounts Payable and Receivable (FI-CA)	1
Transportation Planner	1
General Ledger Accountant - Banks	1
Accounts Payable Manager for Mexico	1
Cash Manager for China	1
Accounts Receivable Accountant for Poland	1
Accounts Payable Manager for Venezuela	1
Manager - Loans Management	1
Insurance Claims Handler	1
Accounts Payable Accountant for Norway	1
Accounts Receivable Accountant for Norway	1
Accounts Receivable Accountant for Russian Federation	1
Accounts Payable Accountant for Russian Federation	1

SAP Fiori Role	Number of SAP Fiori Apps
Accounts Payable Manager for Saudi Arabia	1
Administrator - Legal Content Management	1
Legal Counsel	1
Credit Controller - Prepayments	1
Maintenance Supervisor	1
General Ledger Accountant for Kazakhstan	1
Tax Accountant - Legal Reporting	1
Inventory Accountant for Taiwan	1
Inventory Accountant for China	1
General Ledger Accountant for Oman	1
General Ledger Accountant for Poland	1
General Ledger Accountant for United Arab Emirates	1
Asset Accountant for Serbia	1

## 6.2 App Availability

Later releases of SAP S/4HANA have increased functionality, incremental refinement, and simplifications that can influence future system usage. As a result of these changes, some apps in the SAP ERP or SAP S/4HANA source system may be deprecated, unavailable, or available with a successor in the SAP S/4HANA target release.

This check identifies apps using UI technology types of SAP GUI, SAP Fiori, and Web Dynpro in the source system, and then determines one of the following status categories:

- **Deprecated:** Apps assigned to this category are still supported but outdated. The apps are in maintenance mode, and there are no new features available. If possible, the apps should not be used. You can, however, still use them, but they may no longer be supported in the future and may even be removed. The apps are usually replaced with successor apps.
- **Unavailable:** Apps assigned to this category are not supported any longer. The apps may not work as expected and can no longer be used.
- **Available with Successor:** Apps assigned to this category are still available in the target release; however, successor apps are available. We recommend that you use the successor app where it's available.

While reviewing the identified apps and recommended successors (if available), the default scoping evaluation status can be updated from *New* to either *In Scope* or *Out of Scope* to capture the decision related to each finding.

The following table provides a summary of the check results:

App Name	App ID	UI Technology Type	Status
Analysis of Security Audit Log	SM20	SAP GUI	Deprecated
Bank statement postprocessing	FEBAN	SAP GUI	Unavailable
C FI Maintain Table T056R	OBAC	SAP GUI	Unavailable
Change House Banks/Bank Accounts	F112	SAP GUI	Deprecated
Client Export	SCC8	SAP GUI	Deprecated

App Name	App ID	UI Technology Type	Status
Cost Centers - Actuals	F0940 derived from FIS_FPM_OVP_IPCC4 (FIS_FPM_OVP_IPCC4)	Web Dynpro	Deprecated
Cost Centers - Plan/Actual	F0949 derived from FIS_FPM_OVP_IPCC1 (FIS_FPM_OVP_IPCC1)	Web Dynpro	Deprecated
Cost Centers - Plan/Actual YTD	F0928 derived from FIS_FPM_OVP_IPCC2 (FIS_FPM_OVP_IPCC2)	Web Dynpro	Deprecated
Define Reference Interest Rate Values	OB83	SAP GUI	Unavailable
Display Customer (Accounting)	FD03	SAP GUI	Unavailable
Display Purchase Order	ME23	SAP GUI	Deprecated
Display Quotation	ME48	SAP GUI	Deprecated
Display Request For Quotation	ME43	SAP GUI	Deprecated
Display Vendor (Accounting)	FK03	SAP GUI	Unavailable
Display Vendor (Centrally)	XK03	SAP GUI	Unavailable
Enter Interest Rates	JBIRM	SAP GUI	Unavailable
Human Resources Information System	PPIS	SAP GUI	Deprecated
Internal Orders - Actuals	F0941 derived from FIS_FPM_OVP_IPIO4 (FIS_FPM_OVP_IPIO4)	Web Dynpro	Deprecated
Internal Orders - Plan/Actual	F0948 derived from FIS_FPM_OVP_IPIO1 (FIS_FPM_OVP_IPIO1)	Web Dynpro	Deprecated
Internal Orders - Plan/Actual YTD	F0929 derived from FIS_FPM_OVP_IPIO2 (FIS_FPM_OVP_IPIO2)	Web Dynpro	Deprecated
Legacy System Migration Workbench	LSMW	SAP GUI	Deprecated
Local Client Copy	SCCL	SAP GUI	Deprecated
Profit Centers - Actuals	F0944 derived from FIS_FPM_OVP_IPPC4 (FIS_FPM_OVP_IPPC4)	Web Dynpro	Deprecated
Profit Centers - Plan/Actual YTD	F0932 derived from FIS_FPM_OVP_IPPC2 (FIS_FPM_OVP_IPPC2)	Web Dynpro	Deprecated
Read Security Audit Log	RSAU_READ_LOG	SAP GUI	Unavailable
Remote Client Copy	SCC9	SAP GUI	Deprecated
Security Audit Configuration	SM19	SAP GUI	Deprecated

This check only identifies apps in the source system using UI technology types SAP GUI, Web Dynpro, and SAP Fiori, which will be deprecated, unavailable, or available with a successor in the SAP S/4HANA target release. Apps that will still be available in the target release and unknown apps are not included in this

check. For SAP Fiori apps, an upgrade impact analysis can be performed to identify available and unknown apps (see SAP Fiori Upgrade Impact Analysis).

In addition, this check only shows apps recently used in the source system when the SAP Readiness Check analysis data was collected. The identification of apps is based on ST03N usage data collected in the back end of the source system. Note that this check only displays results if usage data collected contains 12 or more months of usage statistics.

This check is client dependent. If your production system has multiple productive clients, the analysis must be run in each client.

### 6.3 SAP Innovative Business Solutions

No SAP Innovative Business Solutions available

## 7 Required Adjustments for Integration

Overall, the following impact on interfaces was identified in your system:

Total Number	Impacted	Mediated via Middleware
6354	382	0

Furthermore, impacted interfaces in your system can be classified as follows:

Functionality Unavailable	Blocked	Serialization Issue	Impacted but Unused
142	0	0	240

To address these findings, please refer to the *Next Steps* section in the side panel of the *Integration* check within your SAP Readiness Check analysis or review the or review the below-mentioned next steps:

### 7.1 IDoc Interfaces

The IDoc section lists active and inactive IDoc interfaces that are configured in the system. The enumeration is based on the outbound (table EDP13) and inbound (table EDP21) partner profiles, while the usage information is pulled from table EDIDC.

The following impact on used IDoc interfaces was identified in your system:

Total Number	Functionality Unavailable	Blocked	Serialization Issue
12	0	0	0

### 7.2 Web Service Interfaces

All consumer and provider ABAP proxies that are both registered and not registered in SOA Manager are listed in this section. The usage is based on the Web Services runtime data (class CL\_SOAP\_DB\_MONI).

The following impact on used Web service interfaces was identified in your system:

Total Number	Functionality Unavailable	Blocked	Serialization Issue
1878	141	0	0

## 7.3 RFC and BAPI Interfaces

RFC and BAPI interfaces are collected based on the runtime statistics (transaction ST03N). The same statistics provide the usage information. The list is extended with all Remote-Function-Call-enabled (RFC-enabled) custom function modules, which represent explicitly defined potential RFC and BAPI interfaces.

The following impact on used RFC and BAPI interfaces was identified in your system:

Total Number	Functionality Unavailable	Blocked	Serialization Issue	Upgrade Toolset
214	1	0	0	0

## 7.4 BW Extractors

The BW extractors are enumerated based on the ROOSOURCE table.

The following impact on used BW extractors was identified in your system:

Total Number	Functionality Unavailable	Blocked	Serialization Issue
221	43	0	0

## 7.5 OData Service Interfaces

The inventory of OData services in this analysis includes interfaces for OData versions 2 and 4. The interface determination logic detects all OData services based on programming models available from SAP Basis releases 700 and above:

- SAP Gateway Service Builder
- ABAP programming model
- Service Adaptation Definition Language (SADL)
- ABAP RESTful application programming model
- Core Data Services (CDS) views exposed as OData services

There is no usage information associated with the OData services.

The following impact on used OData service interfaces was identified in your system:

Total Number	Functionality Unavailable	Blocked	Serialization Issue
4029	197	0	0

## 7.6 SLT Replications

No data was collected for this interface type during the data collection.

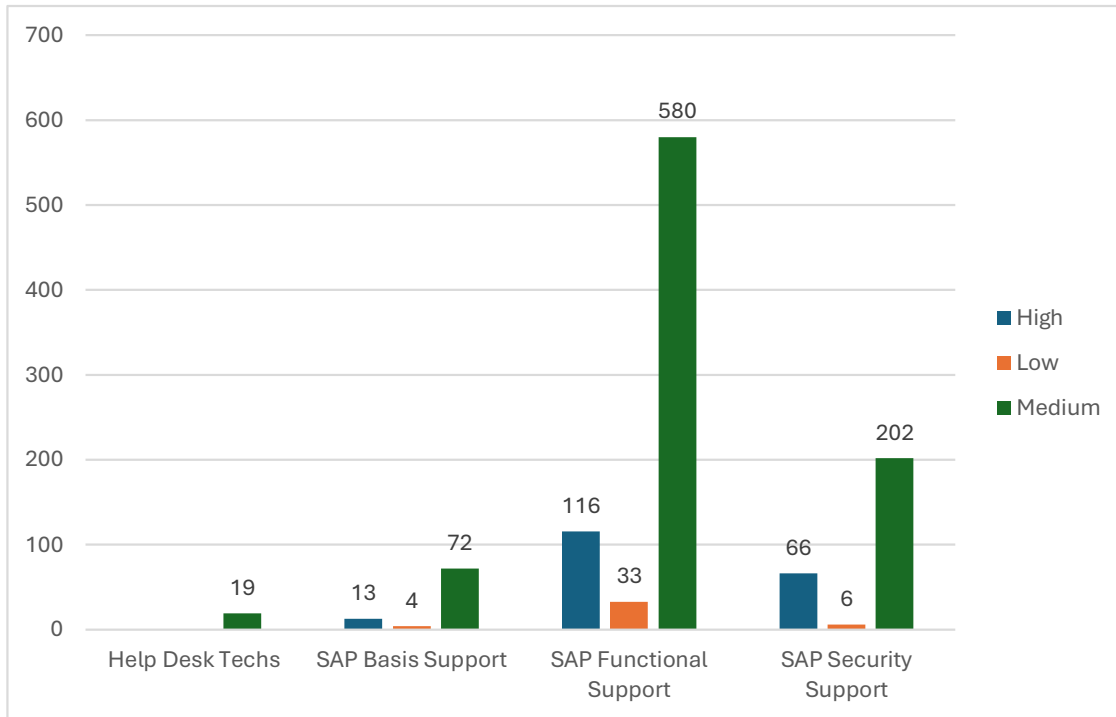
## 7.7 Flat File Interfaces

No data was collected for this interface type during the data collection.

# NYSHCR SAP Tickets Jun 2024-Jun 2025

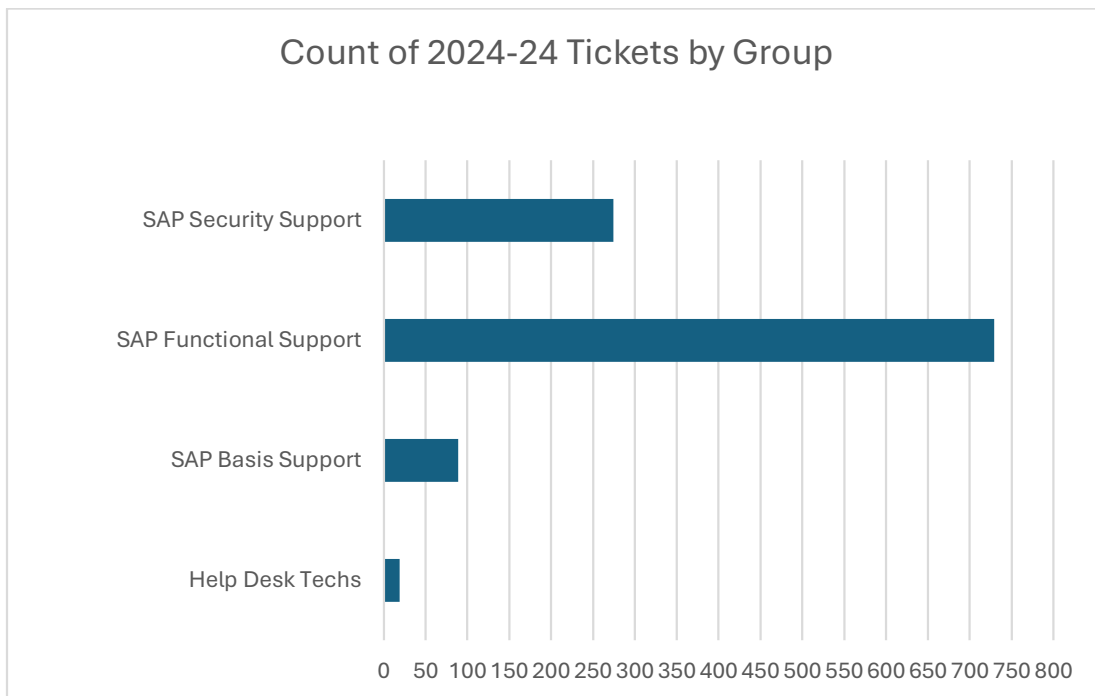
## Tickets by Priority

Count of Request ID	Column Labels			
Row Labels	High	Low	Medium	Grand Total
Help Desk Techs			19	19
SAP Basis Support	13	4	72	89
SAP Functional Support	116	33	580	729
SAP Security Support	66	6	202	274
Grand Total	195	43	873	1111



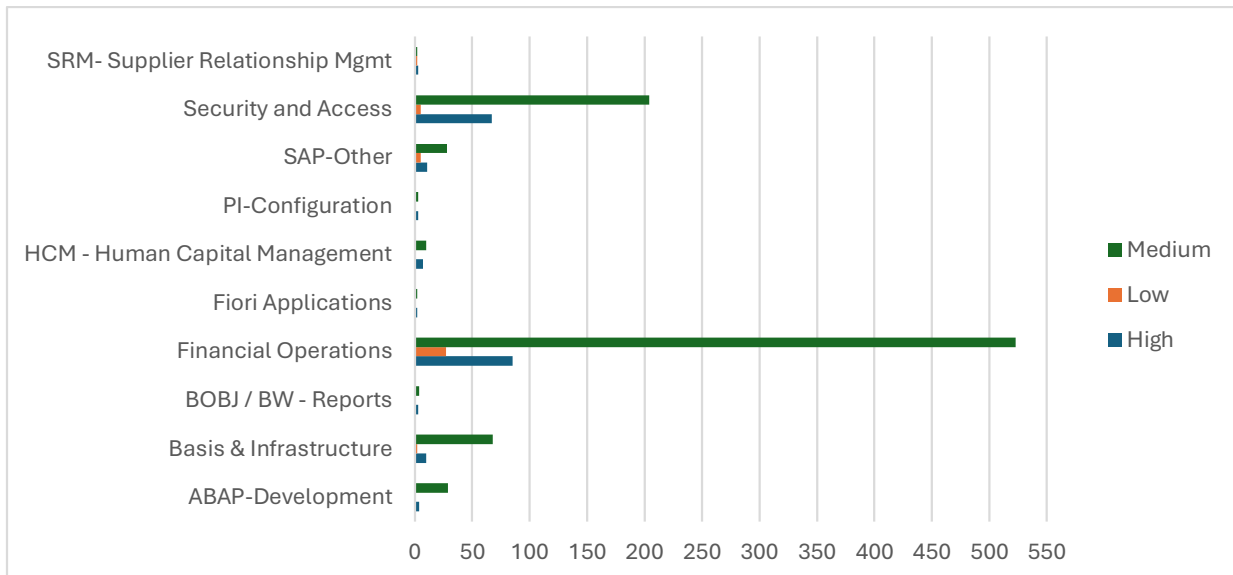
## Tickets by Group

Group	Count of Request ID
Help Desk Techs	19
SAP Basis Support	89
SAP Functional Support	729
SAP Security Support	274



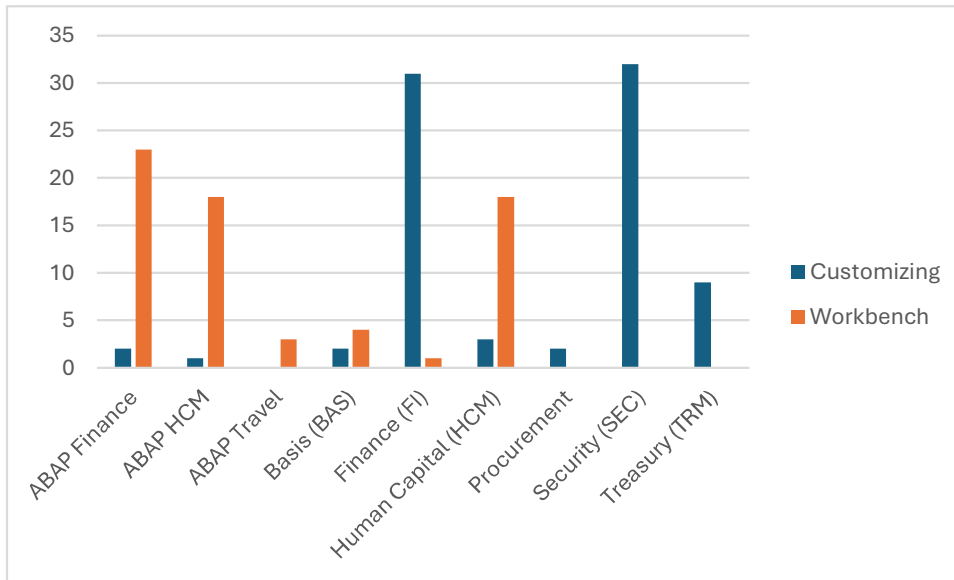
## Tickets by Subgroup

Count of Subcategory Row Labels	Column Labels		
	High	Low	Medium
ABAP-Development	4	1	29
Basis & Infrastructure	10	2	68
BOBJ / BW - Reports	3	1	4
Financial Operations	85	27	523
Fiori Applications	2		2
HCM - Human Capital Management	7		10
PI-Configuration	3		3
SAP-Other	11	5	28
Security and Access	67	5	204
SRM- Supplier Relationship Mgmt.	3	2	2
<b>Grand Total</b>	<b>195</b>	<b>43</b>	<b>873</b>



## S4HANA June 2024-25 Transports by Module & Type

Count of Date	Column Labels			
Row Labels	Customizing	Workbench	Grand Total	
ABAP Finance	2	23	25	
ABAP HCM	1	18	19	
ABAP Travel		3	3	
Basis (BAS)	2	4	6	
Finance (FI)	31	1	32	
Human Capital (HCM)	3	18	21	
Procurement	2		2	
Security (SEC)	32		32	
Treasury (TRM)	9		9	
<b>Grand Total</b>	<b>82</b>	<b>67</b>	<b>149</b>	



## NYSHCR SAP - Current SW Versions (updated June 2025)

### S/4HANA

Product	Release	SP Stack
S4HANA ON PREMISE	1909	04 (05/2021)
ABAP PLATFORM	1909	04 (04/2021)
SAP S/4HANA FOUNDATION	1909	04 (04/2021)
Kernel version	777	700

### Fiori (Stand-alone)

Product (Current)	Release	SP Stack
UI FOR SAP PORTF PROJ MGMT	6	09 (01/2017)
FIORI ERP APPLICATIONS X2	1	09 (01/2018)
AS ABAP FOR S4HANA	7.52	09 (10/2021)
SAP FIORI APPS FOR SAP ERP	1	03 (05/2017)
SAP FIORI FOR S4HANA	1909	04 (04/2021)
SAP FIORI FRONT-END SERVER	6	SP02 (05/2020)
Kernel version	753	1400

### SRM

Product (Current)	Release	SP Stack
SAP SRM (WITH SAP EBP)	7.0 / NW7.01	21 (02/2018)
SAP NETWEAVER	7.5	11 (03/2018)
EHP4 FOR SAP SRM 7.0	EHP4 FOR SAP SRM 7.0	10 (04/2018)
Kernel version	753	1400

### PO (Process Integration being used)

Product (Current)	Release	SP Stack
PI SFTP PGP ADDON	1	SP 05 (11/2017) ]
SAP NETWEAVER	7.5	SP 12 (06/2018)
Kernel version	753	1400

Will be upgraded to SP31 in this month

### Adobe Document Services (ADS)

Product (Current)	Release	SP
SAP NETWEAVER	7.5	0
Kernel version	754	400

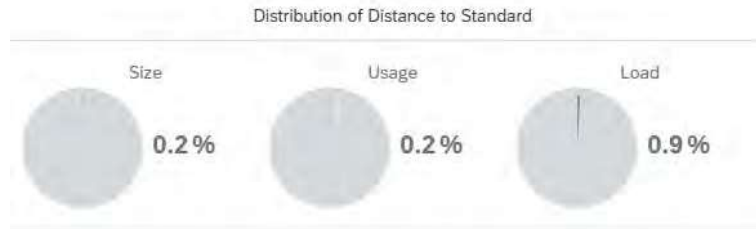
## List of Potential Reports Migrating to SAC

Folder/Functional Area	Report Name	View Count	Priority
Procurement Standard	0305 Procurement Contract Report	351	P1
Procurement - Purchase Order	0099 - Purchase Orders per Requester	160	P1
Procurement Standard	0306 Procurement Purchase Report	128	P1
Procurement Standard	0310 PARIS Report	103	P1
Procurement - Shopping Cart	0084 - Shopping Carts per Requester	80	P1
Procurement - Purchase Order	0097 - Purchase Orders per Contract	63	P1
Procurement Standard	0313 Contract MWBE Report	60	P1
Procurement - Contracts	0092 - Contract Details	58	P1
Procurement Standard	0314 Purchase Order MWBE Report	40	P1
Procurement - Shopping Cart	0085 - Shopping Carts per Order	37	P1
Procurement - Purchase Order	0098 - Purchase Orders per Shopping Cart	34	P1
Procurement - Shopping Cart	0089 - Status of Shopping Carts	26	P1
Procurement - Purchase Order	0096 - Purchase Orders per Vendor & Catalog	24	P1
Procurement - Purchase Order	0095 - Purchase Orders per Product Category	19	P2
Procurement - Purchase Order	0094 - Purchase Orders per Account Assignment	16	P2
Procurement Standard	0312 Purchase Order SDVOB Report	13	P2
Procurement - Contracts	0090 - Contract Cockpit Spend	12	P2
Procurement Standard	0311 Contract SDVOB Report	9	P3
Procurement - Contracts	0091 - Contract Alerts	9	P3
Procurement - Shopping Cart	0088 - Shopping Carts per Vendor & Catalog	9	P3
Procurement - Contracts	0093 - Contracts per Product Category	8	P3
Procurement - Shopping Cart	0086 - Shopping Carts per Account Assignment	8	P3
Procurement Standard	0321-SDVOB Master Goal Plan Contract Report	5	P3
Procurement - Contracts	0202 - State Contract Payments	4	P3
Procurement Standard	0315 MWBE Master Goal Plan Contract Report	4	P3
Procurement Standard	0316 MWBE Master Goal Plan Report - Purchase Orders	4	P3
Procurement - Purchase Order	0036 - Flexible Procurement	3	P3
Procurement - Shopping Cart	0083 - Approval Times	3	P3
Procurement - Shopping Cart	0083 - Drill Down Report from Approval Times Report	3	P3
Procurement - Shopping Cart	0087 - Shopping Carts per Product Category	3	P3
Procurement Standard	0322 SDVOB Master Goal Plan Report - Purchase Orders	3	P3
Procurement - Contracts	0305 Procurement Contract Report	0	P3
Procurement - Purchase Order	0037 - Trade Business Partner	0	P3

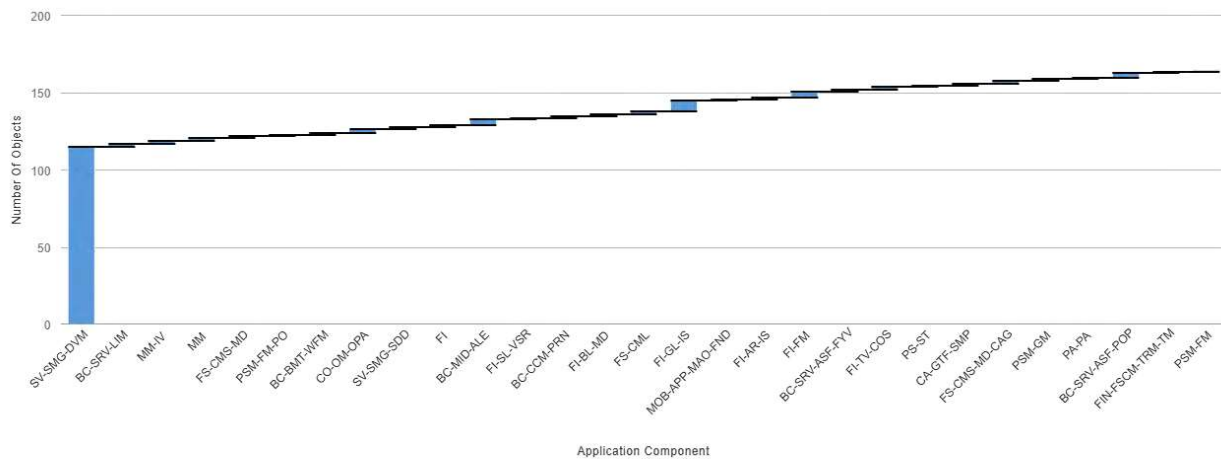


Count of Report Name	Column Labels			Grand Total	
Row Labels	P1	P2	P3		
Budgeting Standard		1	1	5	7
Finance Standard		6	3	3	12
HCM Standard		2	4	20	26
Payroll Standard		5	4	19	28
Procurement - Contracts		1	1	4	6
Procurement - Purchase Order		4	2	2	8
Procurement - Shopping Cart		3		5	8
Procurement Standard		5	1	5	11
Travel				3	3
Travel Standard				1	1
Treasury - Dept Standard		3		8	11
Treasury - Investment Standard		2	5	7	14
<b>Grand Total</b>		<b>32</b>	<b>21</b>	<b>82</b>	<b>135</b>

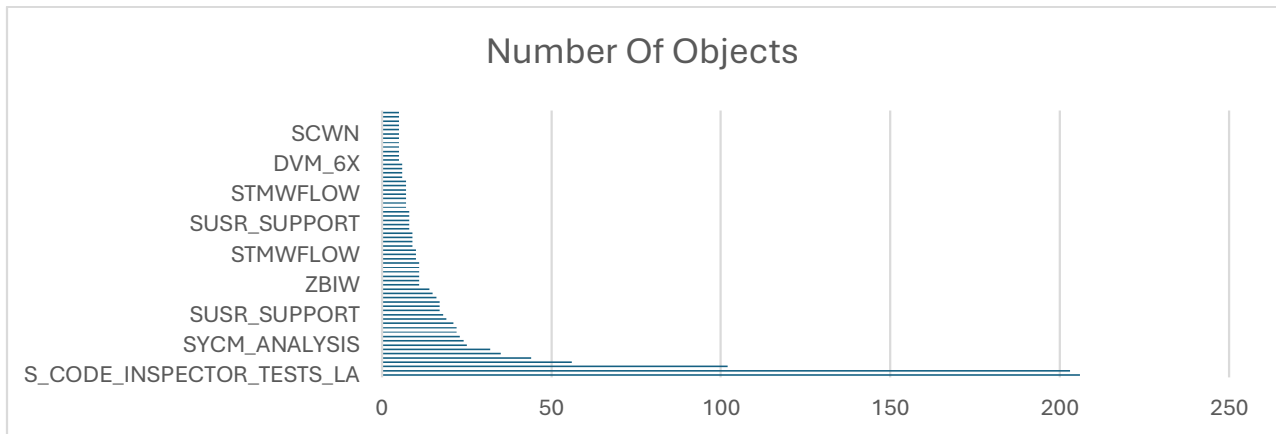
# NYSHCR – S/4HANA Custom Code Overview – April 21, 2025



## Business Modification Classification



## Technical Modifications (5+)



# Custom Code Objects by Package

